

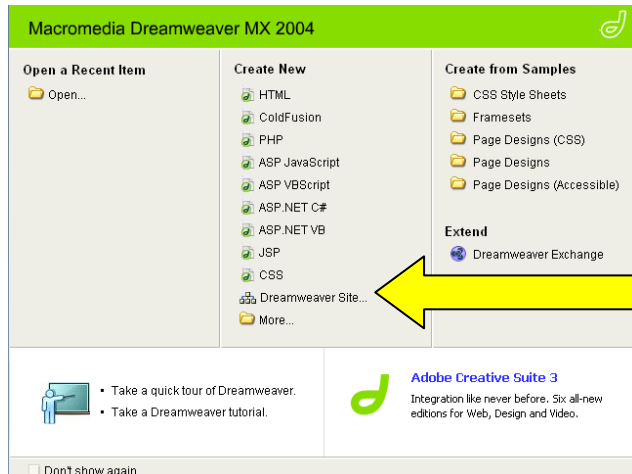


The Basics of Dreamweaver

Following this guide will allow you to create a *basic* website using Dreamweaver.

STEP 1- SETTING UP A NEW SITE

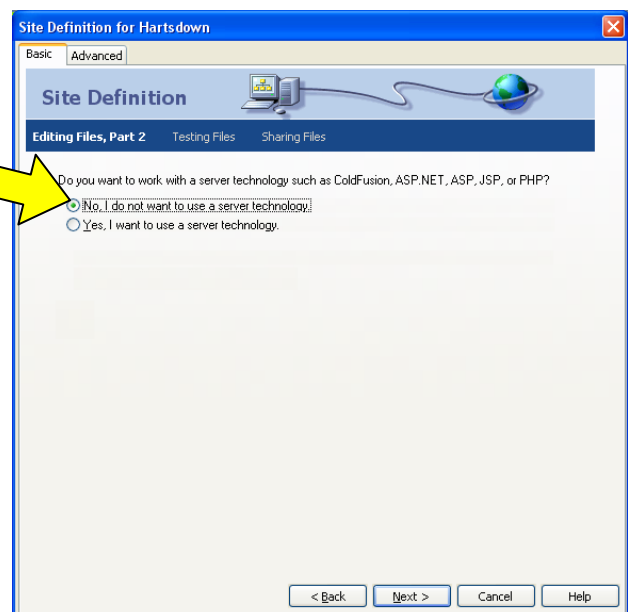
When you load Dreamweaver you will be presented with the following page:



To create a new site click "Dreamweaver Site" shown here.

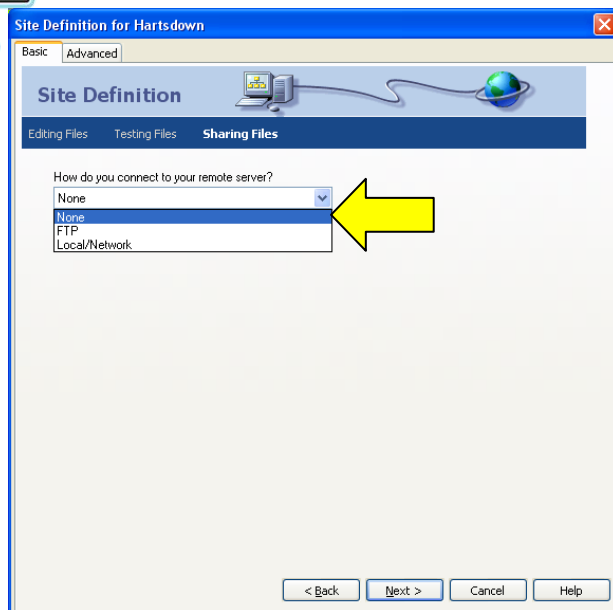
You will then be prompted to give your site a **name**, enter this in the box provided and click "**Next**".

You will now be asked whether you wish to use **Server Technology** to edit your website. Click the toggle option saying "**No, I do not want to use a server technology**".



The **next** screen you are presented with asks you where you wish to **save** your work, **leave this on the default** and click "**Next**".



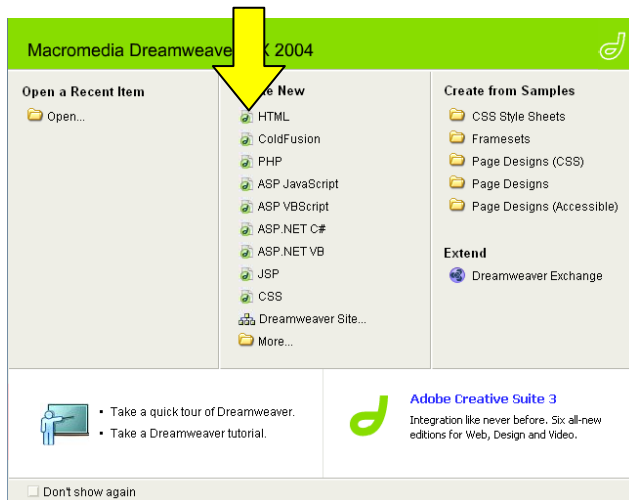


Finally you will be asked how you want to connect to the remote server with the screen shown here.

Select **"None"** from the dropdown list and continue to the next screen where you just need to click **"Done"**.

STEP 2 – CREATING WEBPAGES

From the front screen you can create content for your website. To create a **blank page** select **HTML** from the **"Create New"** menu as shown below:



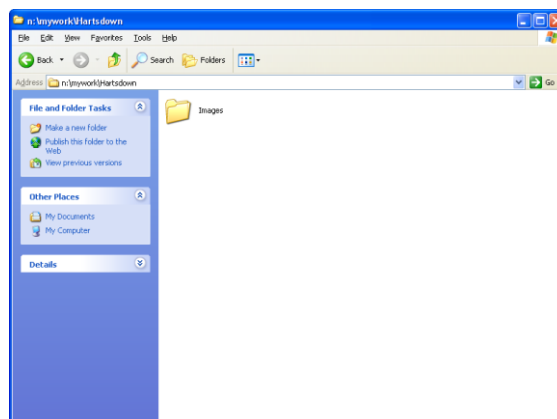


STEP 3 – ADDING CONTENT TO YOUR WEB PAGES

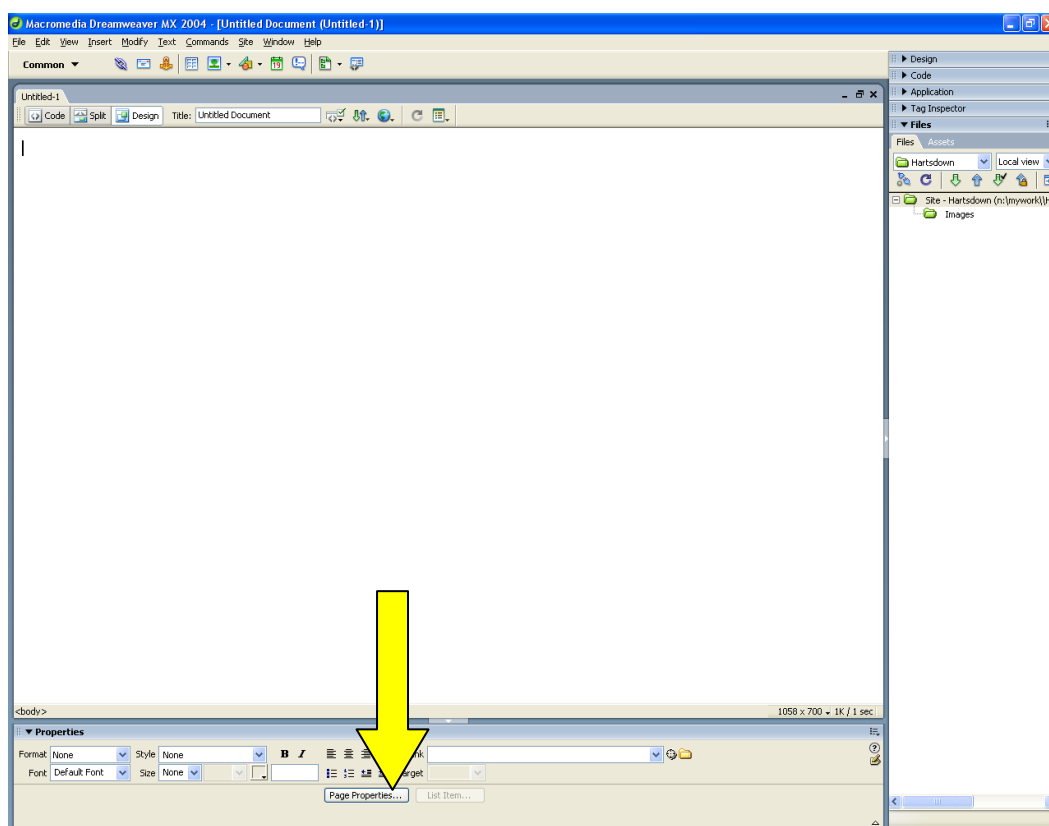
Anything you want to add to your web pages must be in the same directory as the website itself ([n:\MyWork\website name](#))

It is best to create a **folder** inside this directory to store any images you wish to use as you can see here.

You will need to save any pictures to this folder **before** you can add them to your web pages.



When you start your screen will look like the one below. You can change various properties of your page by clicking “**Page Properties**” at the bottom of the screen:



Changing the properties allows you to set various design aspects of your page including default fonts, colours, background image (be careful not to use a background that is too busy!)





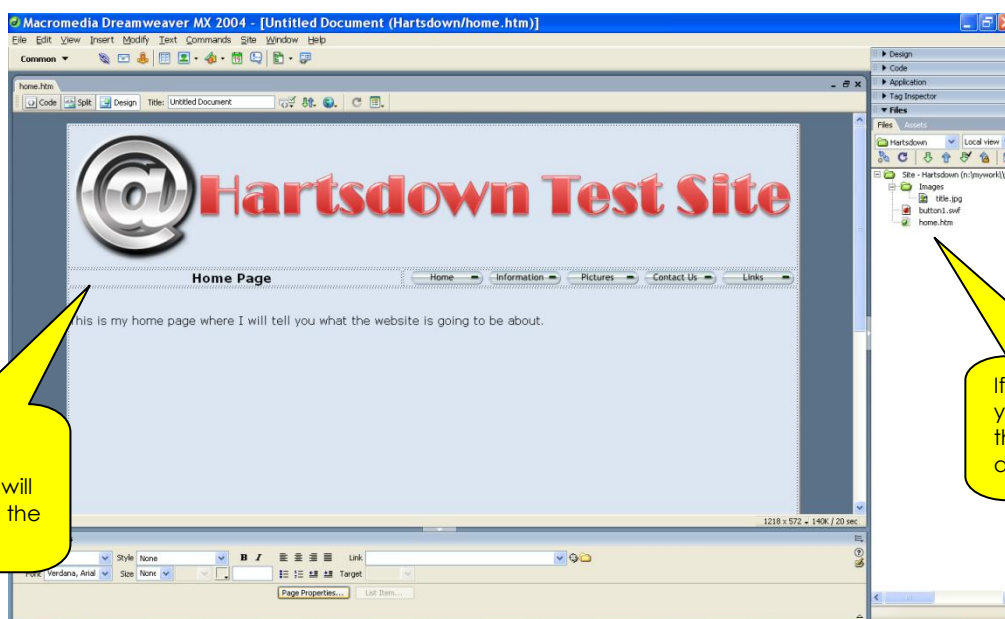
ocr nationals level 3 - ict

In the page you can see pictured below I have **inserted** a table with **3 rows** and **1 column** and made the **width** of this **1000 pixels** and **centred** the table. I changed the page background to dark blue and the table background to lighter blue to make it stand out. (This is quite a common style to use in websites now-a-days).

The title was created using an Art Package and saved as a picture in the **images** folder of my website. This was put into the first row of the table. In the second row I have inserted **flash buttons** by using the **Insert Menu** (Insert > Media > Flash Button). Any information I need to add will be put into the third row of the table which I have stretched to make it fit the page.



It is **recommended** that you use **tables** in your web pages to help you lay them out in a suitable way.



What the web page actually looks like:

